

FDP

FLAT DECK PALLET



4 LIP

- 40" x 48"
- Durable & sanitary alternative to wood and injection molded pallets
- FDA Compliant Materials
- Nestable



OPTIONAL LIPS

- Choose 0, 2 or 4 lips
- 2 lips can be on the long side or short side



0 LIPS



2 LIPS

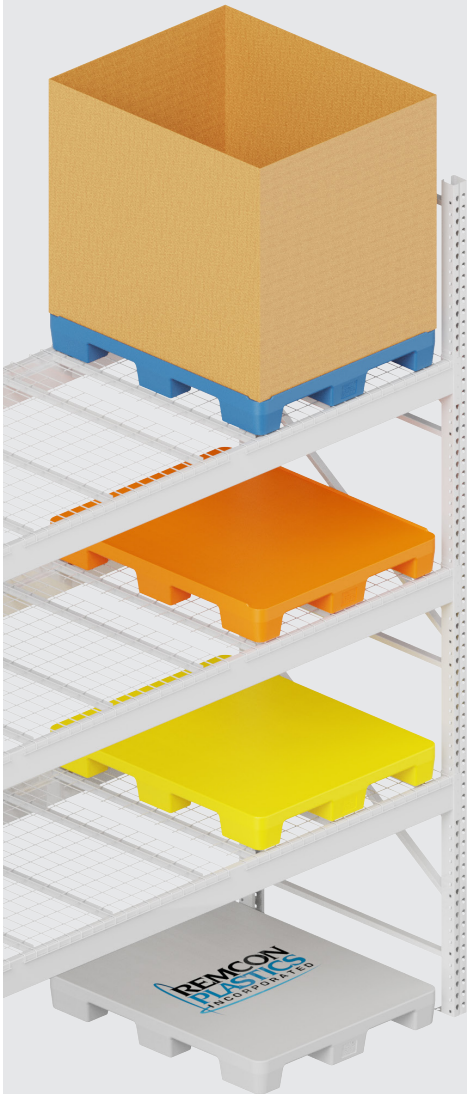
PRODUCT MODEL #	OUTSIDE DIMENSIONS L" x W" x H"	LOAD CAPACITY [lbs] DYNAMIC/STATIC	WEIGHT lbs
FDP 40x48	48" x 40" x 6"	2,500 / 5,000	44

OPTIONAL STEEL REINFORCEMENT. UNSUPPORTED RACK LOAD CAPACITY: 4,000 LBS - 2 STEEL BARS

*** OUR MOST COST EFFECTIVE PALLET OFFERING ***

CUSTOM COLORS

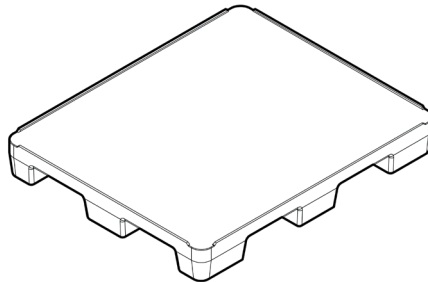
Customize your order with colors representing your brand or the product it carries. Able to do custom colors, even for small quantities.



MOLD ON GRAPHICS

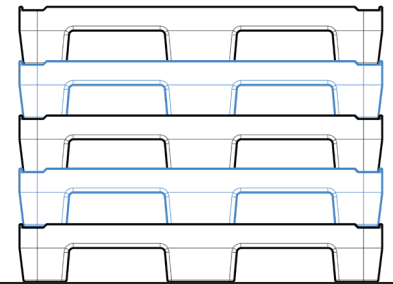
Customize your pallet with your logo or special markings

SINGLE PIECE PRODUCT



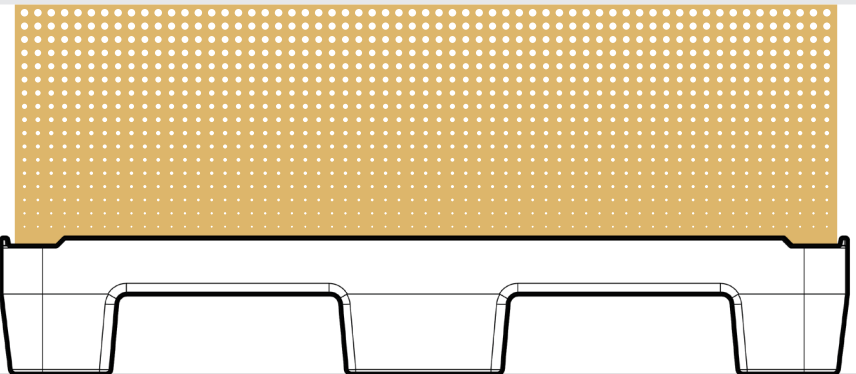
Sanitary and Easy to Clean!

NESTABLE WITH LIPS



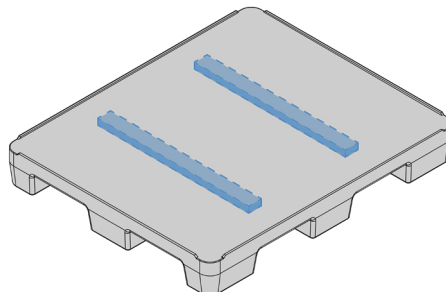
Lips allow the pallets to nest neatly. Without lips, are still stackable.

LIP



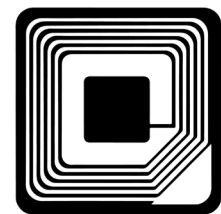
Allows for the secure hold of product

STEEL REINFORCEMENT



Add strength and rigidity by molding in steel reinforcements

RFID OPTIONAL



Embedded RFID Technology to track your pallets