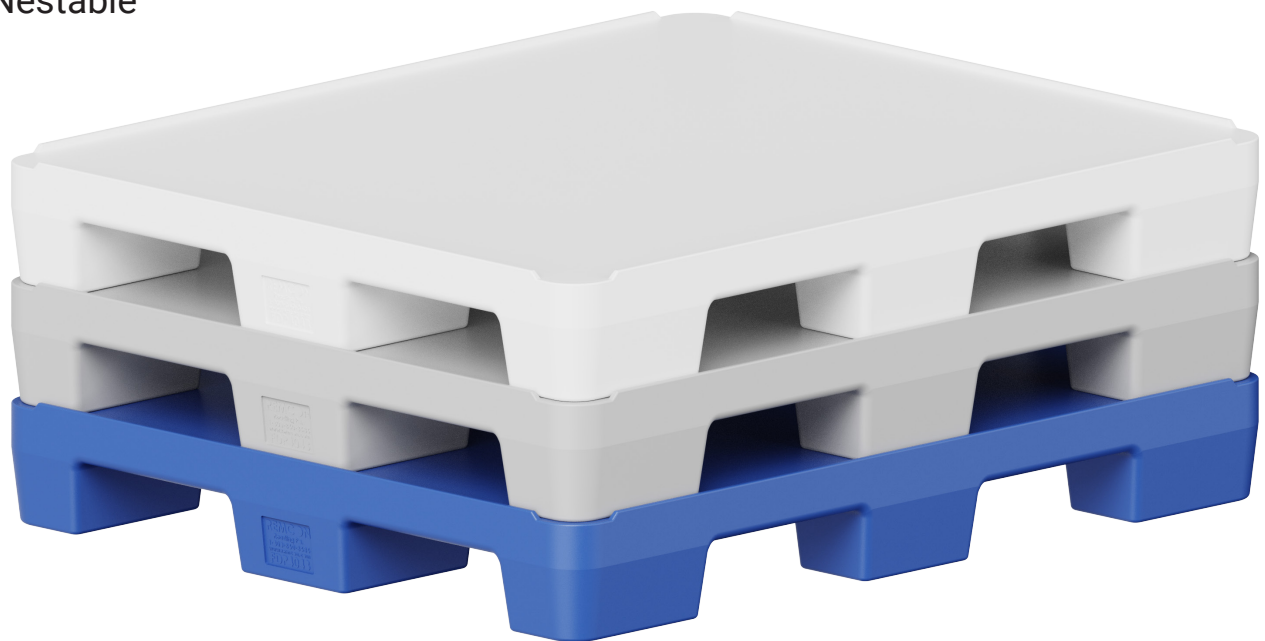


# FDP

## FLAT DECK PALLET

### 4 LIP

- 40" x 48"
- Durable & sanitary alternative to wood and injection molded pallets
- FDA Compliant Materials
- Nestable

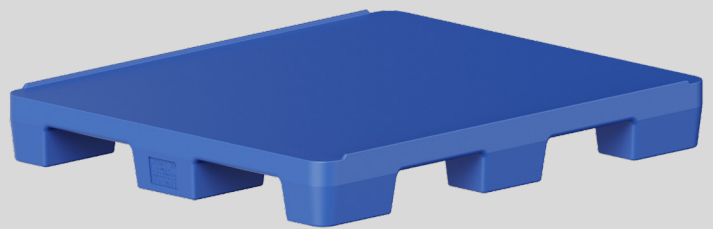


### OPTIONAL LIPS

- Choose 0, 2 or 4 lips
- 2 lips can be on the long side or short side



**0 LIPS**



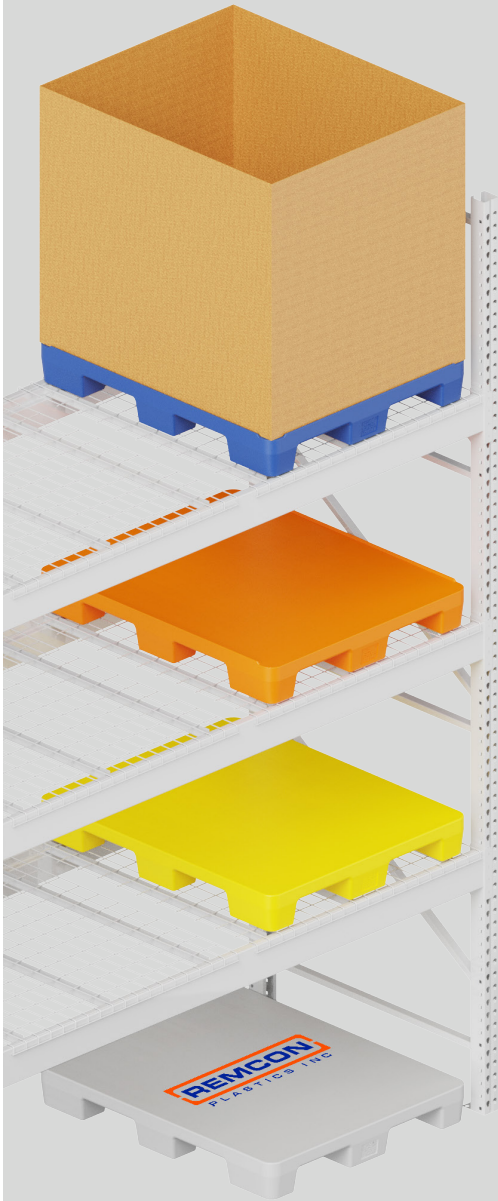
**2 LIPS**

PRODUCT MODEL #	OUTSIDE DIMENSIONS L" x W" x H"	LOAD CAPACITY [lbs] DYNAMIC/STATIC	WEIGHT lbs
FDP 40x48	48 x 40 x 6	2,500 / 5,000	44

OPTIONAL STEEL REINFORCEMENT. UNSUPPORTED RACK LOAD CAPACITY: 4,000 LBS - 2 STEEL BARS

### CUSTOM COLORS

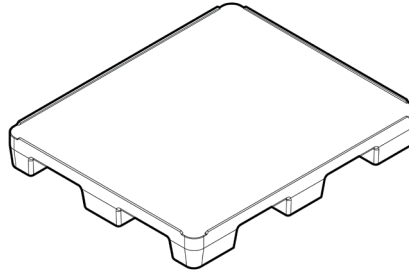
Customize your order with colors representing your brand or the product it carries. Able to do custom colors, even for small quantities.



### MOLD ON GRAPHICS

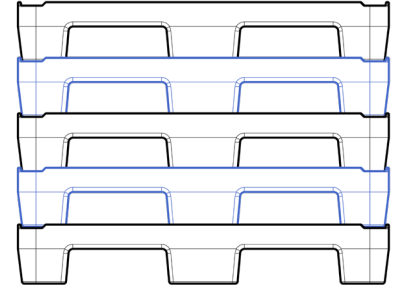
Customize your pallet with your logo or special markings

### SINGLE PIECE PRODUCT



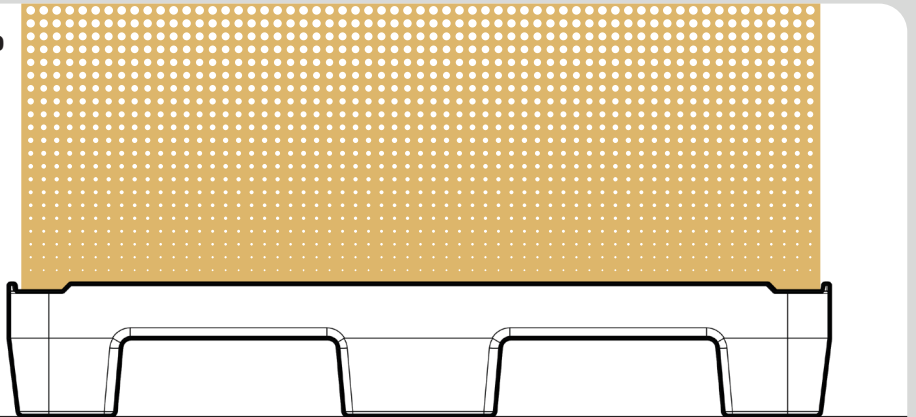
Sanitary and Easy to Clean!

### NESTABLE WITH LIPS



Lips allow the pallets to nest neatly. Without lips, are still stackable.

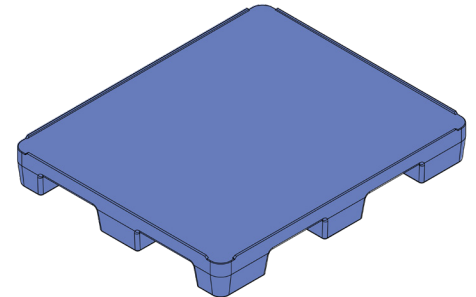
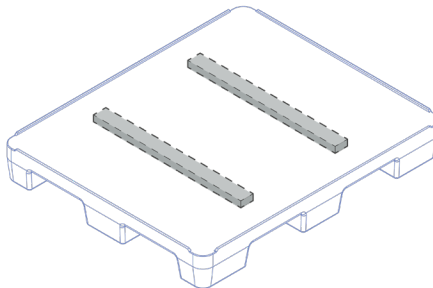
### LIP



Allows for the secure hold of product.

### STEEL REINFORCEMENT

\*not visible on outside surface



Add strength and rigidity by molding in steel reinforcements