

# DBH

## DRY BULK HOPPER

- 60° true “Mass-Flow” Hopper Design facilitates discharge and reduces segregation
- 45 cu ft Bottle
- 5,000 lbs Capacity
- USDA/FDA Approved
- Custom Colors and Graphics Available



PRODUCT MODEL #	DIMENSIONS L" x W" x H"	WORKING CAPACITY cu/ft	CAPACITY lbs	WEIGHT lbs
60/45	48 x 48 x 79	45	5000	290

**PROPRIETARY DISCHARGE VALVES IN APPLICATION SPECIFIC CONFIGURATIONS**

8" Manual Slide Gate Valve

8" Manual Iris Valve

8" Butterfly Valve

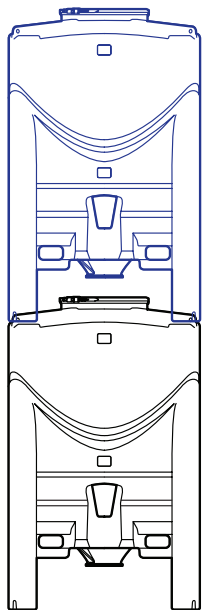
*Or we can incorporate your valve!*

**LID**

Gasketed lid available with either steel or HDPE locking ring. Vacuum relief lid available to assist sanitary discharge.

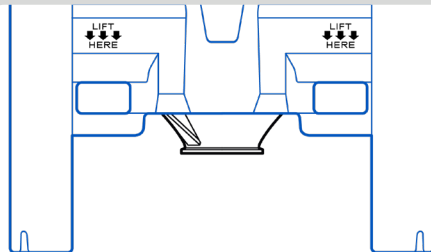


\*CUSTOM TRANSITION PIECES ARE AVAILABLE



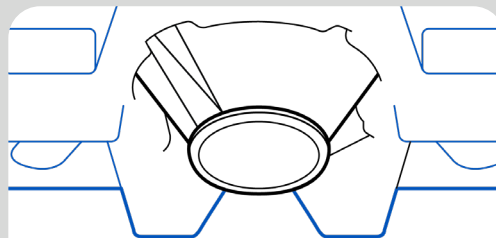
**STACKABLE**

Hopper assemblies can be stacked providing significant space savings.



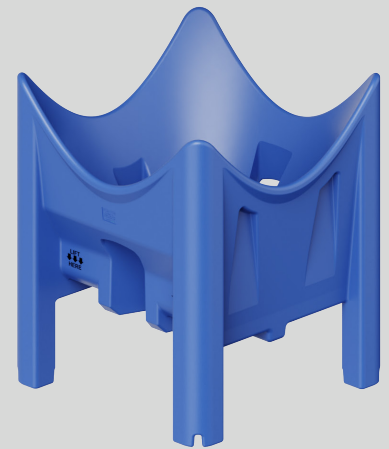
**FORK POCKETS**

Built-in pockets ensure easy forklift entry and safe hopper transport.



**DISCHARGE FLANGE OPTIONS**

Flanged 8" outlet accepts a variety of flow control devices.



**INTERLOCK MECHANISM**

Toolless separation of bottle from base allows "bulk-bag" style discharge and easy cleaning.

**DRY BULK HOPPER ACCESSORIES**

**LIFTING SPIDER** - Facilitates removal and transport of fully loaded hopper bottle for discharge.

**SPIDER STRAP KIT** - Includes lifting straps and shackles for use with lifting spider.

**TRANSPORT TIE-DOWN** - Includes 2 nylon straps & spring actuated carabiners used to secure hopper during transport.

**SUCTION RELIEF VALVE**

Differential pressure vent provides suction relief to hopper during discharge.

**HDPE LEVER LOCKING LID RING** - FDA Approved 21 1/2" plastic locking ring for hopper lid.

**TRANSPORT DOLLY** - ask your sales rep to aid in selecting a dolly that fits your needs!

