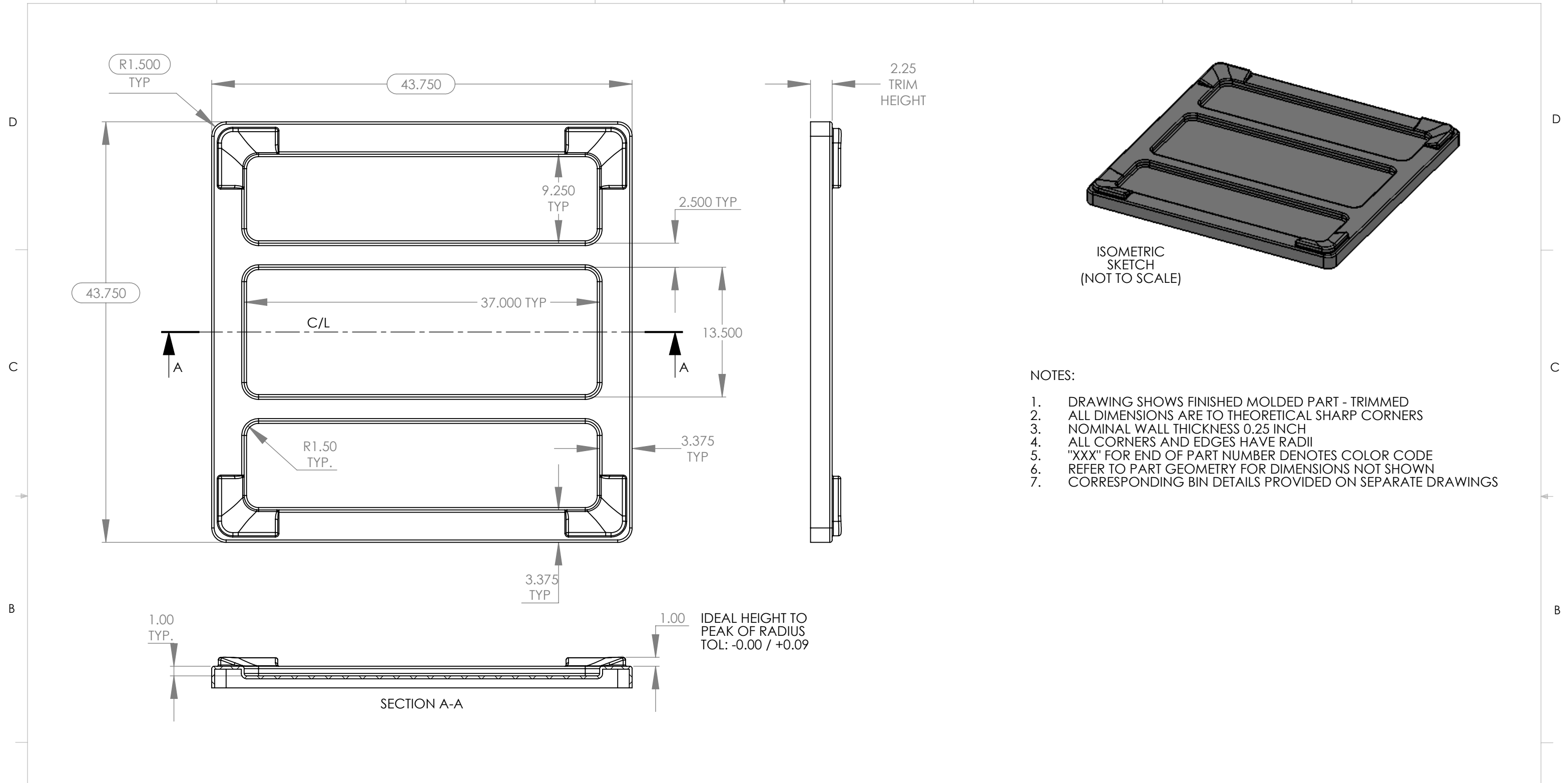


8 7 6 5 4 3 2 1



NOTES:

1. DRAWING SHOWS FINISHED MOLDED PART - TRIMMED
2. ALL DIMENSIONS ARE TO THEORETICAL SHARP CORNERS
3. NOMINAL WALL THICKNESS 0.25 INCH
4. ALL CORNERS AND EDGES HAVE RADII
5. "XXX" FOR END OF PART NUMBER DENOTES COLOR CODE
6. REFER TO PART GEOMETRY FOR DIMENSIONS NOT SHOWN
7. CORRESPONDING BIN DETAILS PROVIDED ON SEPARATE DRAWINGS

PROPRIETARY AND CONFIDENTIAL
 THE INFORMATION CONTAINED IN THIS DRAWING IS THE SOLE PROPERTY OF REMCON PLASTICS INC. ANY REPRODUCTION IN PART OR AS A WHOLE WITHOUT THE WRITTEN PERMISSION OF REMCON PLASTICS INC IS PROHIBITED.

		UNLESS OTHERWISE SPECIFIED:				Remcon Plastics Inc. 208 Chestnut Street, Reading Pa, 19602	
		DIMENSIONS ARE IN INCHES		DRAWN	PFE	9/16/13	TITLE: TR-51 BULK BIN LID GENERAL SPECIFICATIONS
		TOLERANCES:		CHECKED	PFE	9/16/13	
		FRACTIONAL: ±1/64		ENG APPR.	KM	9/16/13	
		ANGULAR: ±1/2DEG		MFG APPR.			
		TWO PLACE DECIMAL ±.020 in/in		Q.A.			SIZE DWG. NO. REV B 010203351001XXX A
		THREE PLACE DECIMAL ±.010 in/in		COMMENTS:			
PROJECT NUMBER: PROP. UPDATES		MATERIAL LLDPE				SCALE: 1:10 EST. WT.: 30# SHEET 1 OF 1	
FINISH SMOOTH		APPLICATION DO NOT SCALE DRAWING					

8 7 6 5 4 3 2 1