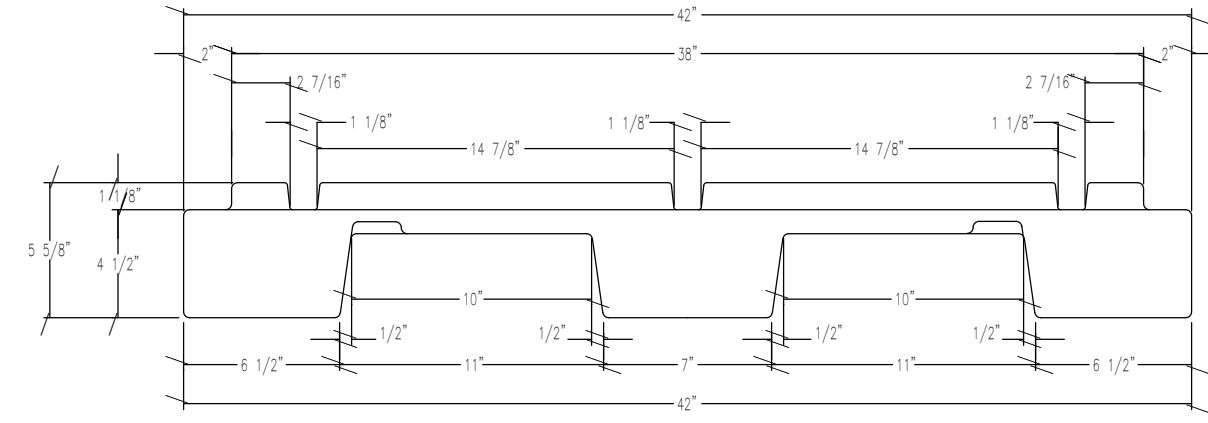
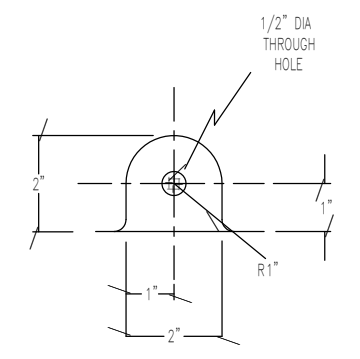


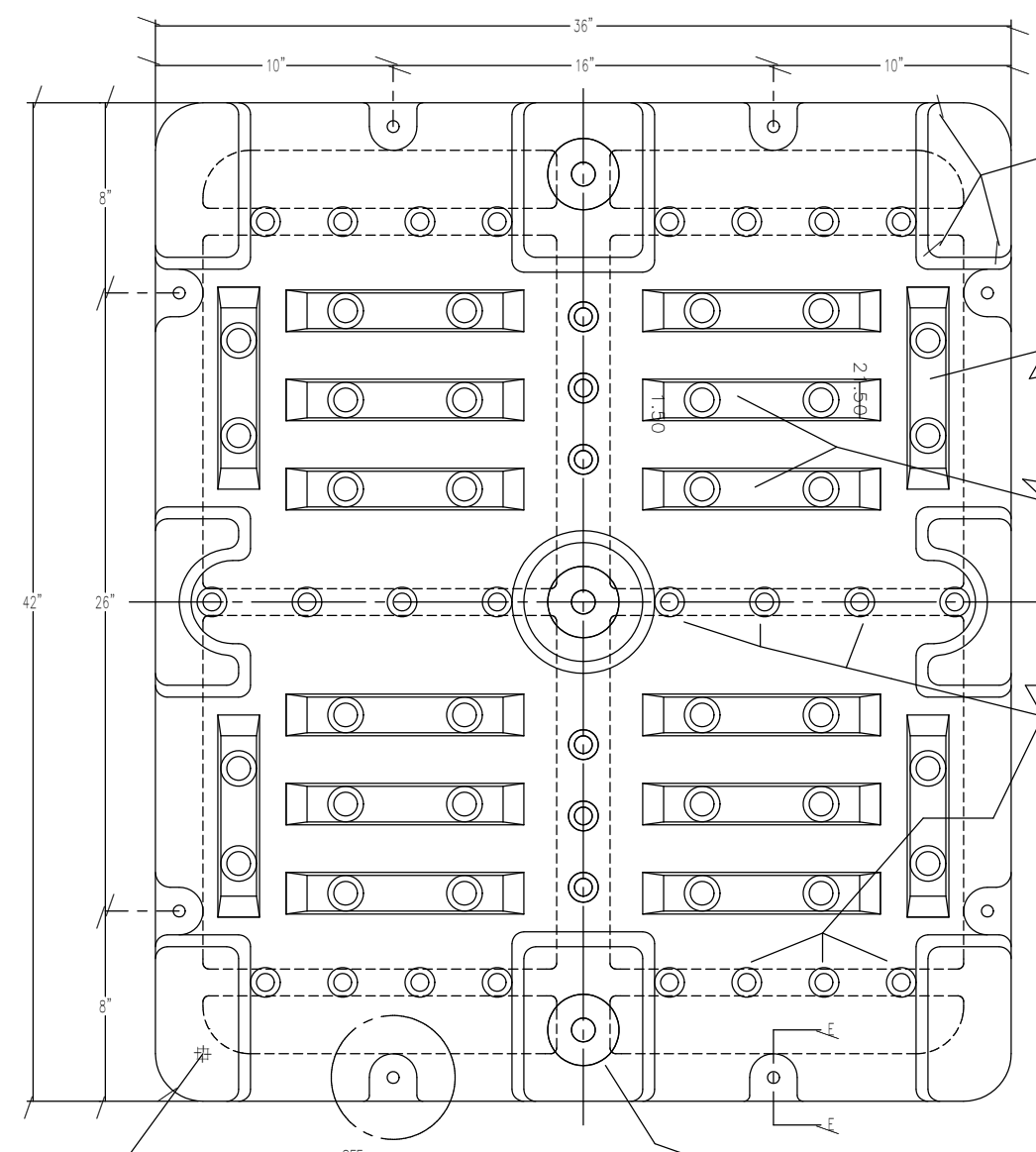
END ELEVATION



SIDE ELEVATION



DETAIL #1
BOTTOM VIEW OF MOUNTING THROUGH-HOLES AND RECESSES (SCALE 1:2, TYP 8 PLCS)



BOTTOM VIEW

NOTE: 1/2" RADII ON ALL LEG CORNERS EXCEPT FOR 4 OUTSIDE CORNERS OF PALLET

KISS-OFF STYLE-02 (TYP 4)

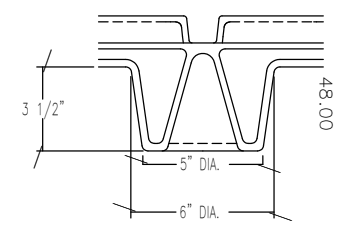
KISS-OFF STYLE-01 (TYP 12)

KISS-OFF STYLE-03 (TYP 24)

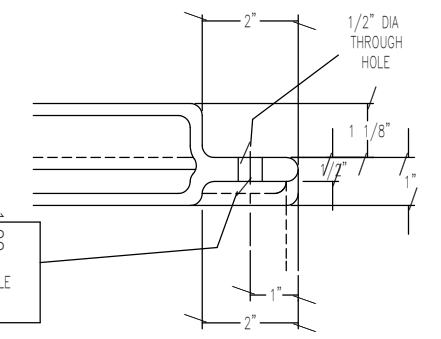
KISS-OFF STYLE-04 (TYP 3)

SEE DETAIL #1

R2" TYP



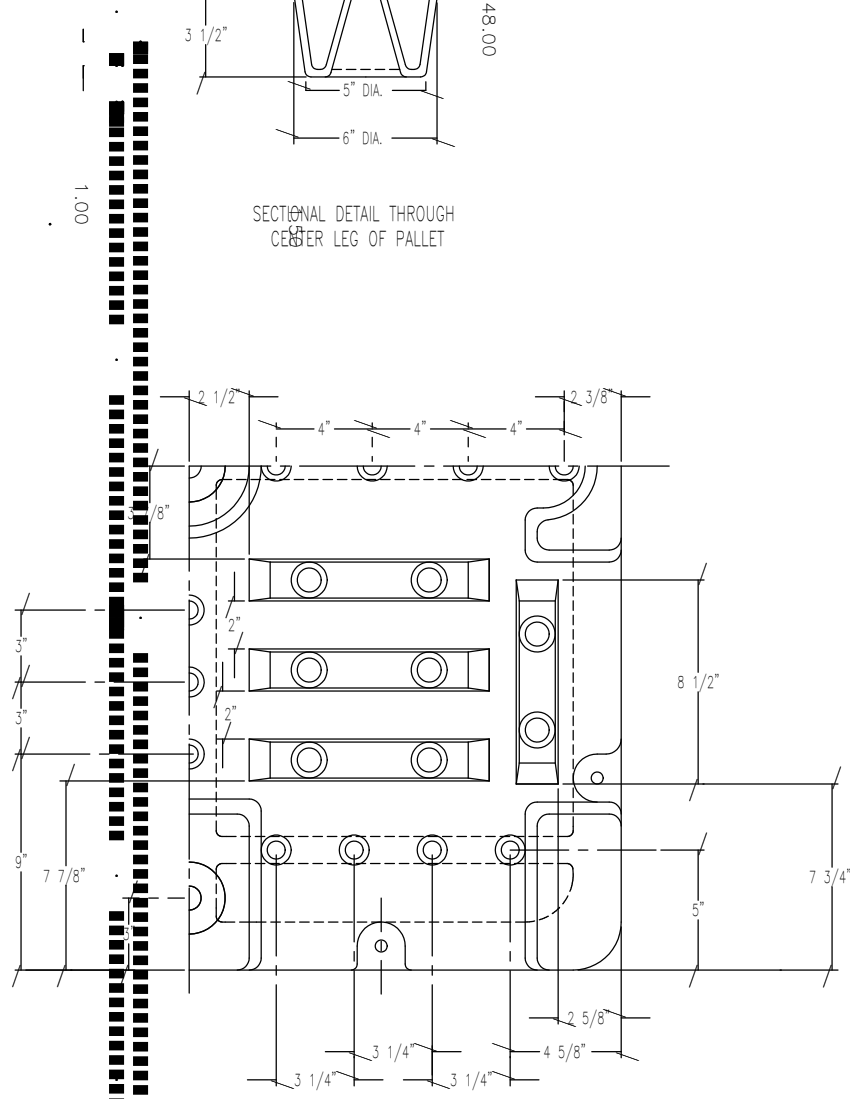
SECTIONAL DETAIL THROUGH CENTER LEG OF PALLET



NOTE: NO RADII - MAINTAIN SHARP EDGE AROUND THROUGH-HOLE ON BOTH SIDES

SECTIONAL DETAIL ON E-E FOR MOUNTING THROUGH-HOLES (SCALE 1:2, TYP 8 PLCS)

21:50



TYPICAL QUARTER-VIEW OF BOTTOM FOR KISS-OFF LOCATIONS

NOTES:

- SCALE FOR QUOTE/ESTIMATING PURPOSES ONLY.
- DRAWING SHOWS AS-MOLDED PALLET BASE.
- ALL DIMENSIONS ARE REFERENCED TO THEORETICAL SHARP CORNERS ON OUTSIDE SURFACE OF MOLDED PART, UNLESS OTHERWISE STATED.
- UNLESS STATED OTHERWISE, ALL CORNERS WILL HAVE RADI. ALL UNSPECIFIED RADII TO BE 1/4"
- KISS-OFFS TO BE MADE SO THAT MOLD IS "METAL SAFE" TO ALLOW FOR FINE TUNING OF KISS-OFF HEIGHTS
- WALL THICKNESS WHERE SHOWN FOR REPRESENTATION ONLY.
- CERTAIN LOGICAL HIDDEN LINES OMITTED FOR CLARITY.

TOLERANCES		REVISIONS			REMCON PLASTICS INC.		
EXCEPT AS NOTED	NO.	DATE	BY	TITLE	DRAWN BY	DATE	SHEET OF
DECIMAL	±	1	02/16/94	PFE	PFE	01/25/94	2
FRACTIONAL	±	2	02/22/94	PFE			
ANGULAR	±	3					
		4					
		5					
				PALLETS FOR 474138 NESTABLE BIN STYLE-01		DRAWING NO. D-10323	
				SCALE 1:4		INDEX NO. 01300	