

# Built tough. Built easy to clean. Built to last.

## Stackable

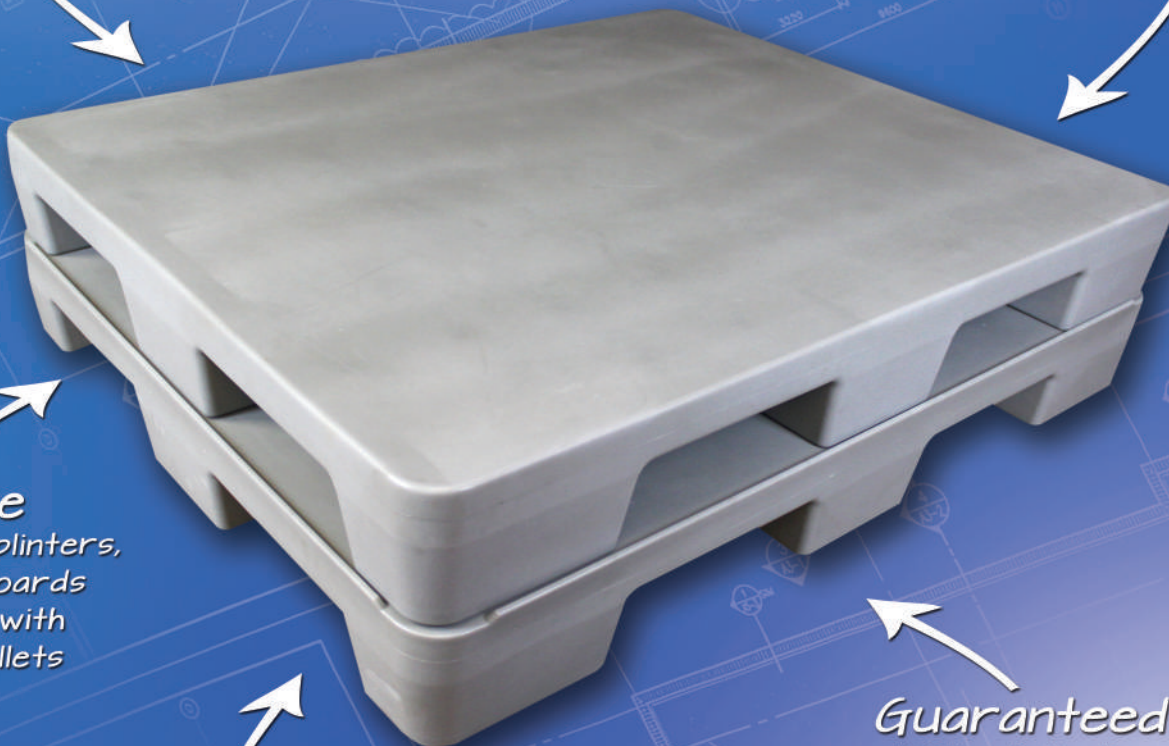
Lipped nesting design  
makes pallets stay put  
when stacked

## Durable

Double-wall construction  
resists dents and cracks,  
lasting longer than wood

## Easy to clean

Simply hose down with  
soap and water



## Safe

No nails, splinters,  
or loose boards  
as seen with  
wood pallets

## Sanitary

Nonporous polyethylene  
resists dirt and contamination  
build-up as seen with  
wood pallets

## Guaranteed

100% satisfaction



## This is more than providing you with pallets This is a relationship

Remcon Plastics has been creating high-quality, durable rotomolded products for more than 30 years. We value our customers and always seek to understand the challenges that their businesses face. Because we deal with industries where performance is key — industries like pharmaceutical, meat and poultry processing, food and beverage, and fruit and vegetable growing and processing, to name a few — we understand that our customers rely on us to get it right. And we do. We've listened to what our customers need...really listened. And along the way, we've adapted to fit those needs.

***Because if our customers aren't happy, we aren't happy. It's as simple as that.***

## We're here for you

Every new person we meet is a long-term customer in our eyes. We believe that if we provide quality products and treat our customers with integrity and appreciation, everyone wins. We listen to your concerns, and look for ways to help your business. If you have a unique need, we'll find a way to fill it. If you have an issue, we will address it. We will always make sure that you get the attention and service you deserve.

# How to select the right pallet to meet your needs

At Remcon, not only do we offer some of the industry’s most well-designed and well-built rotomolded pallets as part of our standard product range, but we specialize in working alongside our customers to design pallets specific for their applications. We recognize that sometimes an “off-the-shelf” item will work, and sometimes it will not. That’s why we give you the choice to “Buy” or “Build” the pallet that is best for your business.

BUY				BUILD
	Standard Pallet	XGrip Pallet	Lipped Pallet	Custom Design
<b>Why choose:</b>	The most economical, easier-to-clean alternative to wood pallets	The ideal choice when items on the pallet overhang the edges and something is needed to help keep items from slipping off the pallet	The ideal choice when items on the pallet do not overhang the edges and something is needed to help keep items on the pallet	Designed exclusively to your specifications to fit perfectly with your operations
Standard surface	✓		✓	
Surface contains four 2” wide slip-resistant strips		✓		
Items may extend beyond pallet edge	✓	✓		
1/4” perimeter lip ensures items stay within the pallet edges			✓	

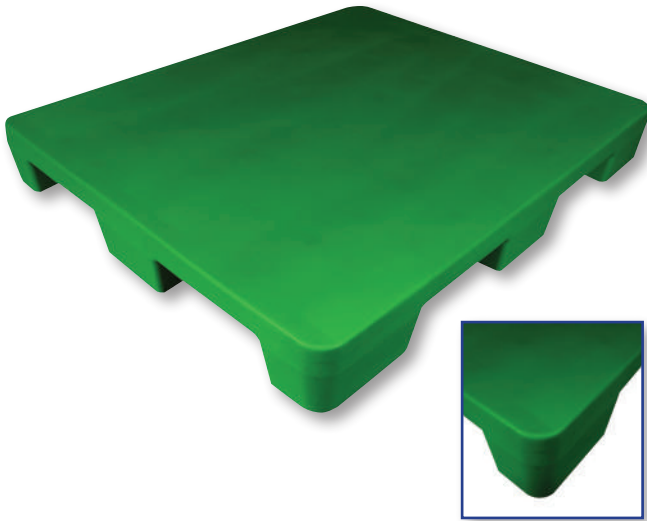
## BUY – Select a pallet style

**All REMCON pallets are gray or natural in color and come with the following STANDARD features:**

- Made with 100% virgin polyethylene for optimal impact strength
- Polyethylene and pigments used to manufacture the pallets are all FDA compliant
- Seamless, rotationally-molded construction offers excellent durability, strength, and crack-resistance
- All pallets have a four-way entry so they can be pallet-jacked or forklifted
- Nonporous polyethylene resists dirt and contamination build-up as seen with wood pallets
- No nails, splinters, or loose boards as seen with wood pallets
- Rugged nesting design makes pallets stay put when stacked
- Simply hose down with soap and water for easy cleaning
- Custom colors available
- 100% guarantee for one full year

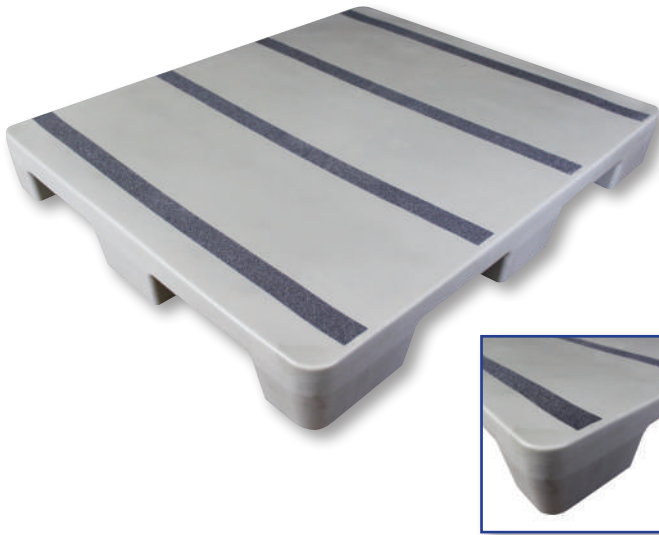


*Nine-legged underside makes for easy four-way forklift entry*



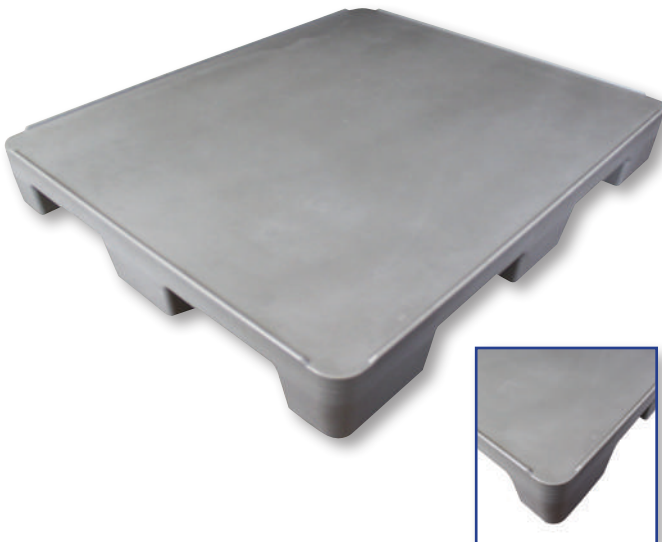
**Standard Pallet –**  
*The most economical, easier-to-clean alternative to wood pallets:*

Sizes	Width		Length		Height		Weight	
	in	cm	in	cm	in	cm	lbs	kg
40" x 48"	40	101.5	48	123	6	15.25	44	20
48" x 48"	48	123	48	123	6	15.25	51	23



**XGrip Pallet –**  
*The ideal choice when items on the pallet overhang the edges and something is needed to help keep items from slipping off the pallet:*

Sizes	Width		Length		Height		Weight	
	in	cm	in	cm	in	cm	lbs	kg
40" x 48"	40	101.5	48	123	6	15.25	44	20
48" x 48"	48	123	48	123	6	15.25	51	23



**Lipped Pallet –**  
*The ideal choice when items on the pallet do not overhang the edges and something is needed to help keep items on the pallet:*

Sizes	Width		Length		Height		Weight	
	in	cm	in	cm	in	cm	lbs	kg
40" x 48"	40	101.5	48	123	6.25	16	44	20
48" x 48"	48	123	48	123	6.25	16	51	23

# BUILD – Let us work with you to create a new pallet with all the unique features you need

## **REMCON specializes in custom solutions by:**

- listening carefully to what you are doing and what you want to achieve
- studying your application for potential consolidation of parts
- brainstorming with our design and production teams
- building and assembling a product that will last for years
- creating a unique solution that's right for your company

Our entire engineering design team has created custom plastic rotational molding solutions to satisfy the toughest problems and the finest details. Our team of designers and lean manufacturing specialists will visit your facility, map your process, and develop the optimum pallet solution for your needs.

**Call us to discuss your situation.**



## **We mean it. Here's your guarantee.**

We're sure that our Poly Pallet Series offers you the long-lasting, dependable product you're looking for. So sure that if for any reason you're not satisfied with the workmanship or quality of the materials we use in making this product, simply contact us during the first year of ownership. You have our guarantee that we'll address the situation to your satisfaction or refund your money.



# Call us today.

**We'll get you the right products  
and solutions to help your business.**

**Remcon Plastics  
208 Chestnut St.  
Reading, PA 19602-1809**

Phone: 610.376.2666  
Toll-free: 1.800.360.3636  
Fax: 610-375-4750



[www.remcon.com](http://www.remcon.com) • [info@remcon.com](mailto:info@remcon.com)

**REMCON  
PLASTICS  
INCORPORATED**  
We listen, develop and deliver!